

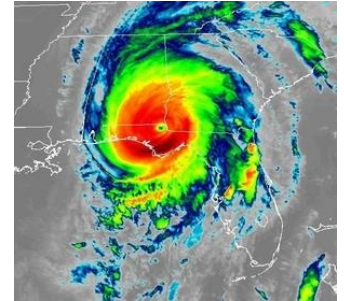
eVENT Hurricane Tracking Advisory

WillisRe 

Tropical Storm Michael

Information from NHC Advisory 19A, 8:00 AM EDT Thu Oct 11, 2018

On the forecast track, the center of Michael will continue to move across central South Carolina this morning, then move across portions of central and eastern North Carolina and southeastern Virginia this afternoon and this evening, and move into the Atlantic Ocean by late tonight or early Friday. Maximum sustained winds are near 50 mph (85 km/h) with higher gusts. Little change in strength is expected today, with the strongest winds primarily spreading northward along the coast of the Carolinas. Michael is forecast to intensify as it becomes a post-tropical low over the Atlantic late tonight or early Friday.

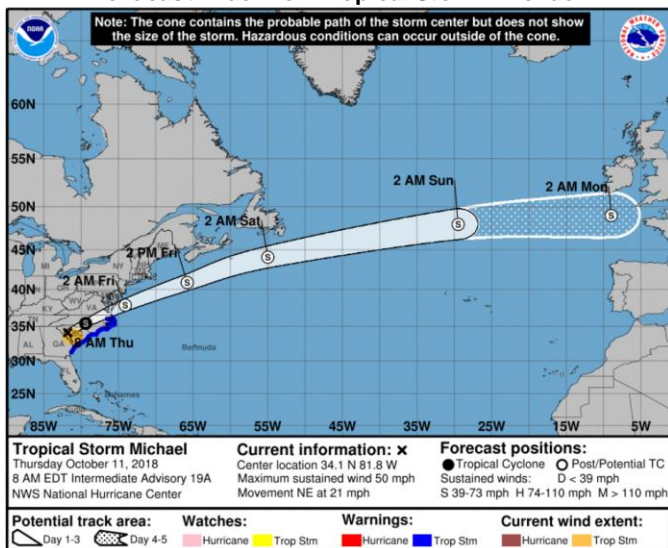


Intensity Measures		Position & Heading		U.S. Landfall (NHC)	
Max Sustained Wind Speed:	50 mph (Tropical Storm)	Position Relative to Land:	40 mi WNW of Columbia SC	Est. Time & Region:	Post landfall
Min Central Pressure:	986 mb	Coordinates:	34.1 N, 81.8 W		
Trop. Storm Force Winds Extent:	160 miles	Bearing/Speed:	NE or 45 degrees at 21 mph	Est. Max Sustained Wind Speed:	n/a

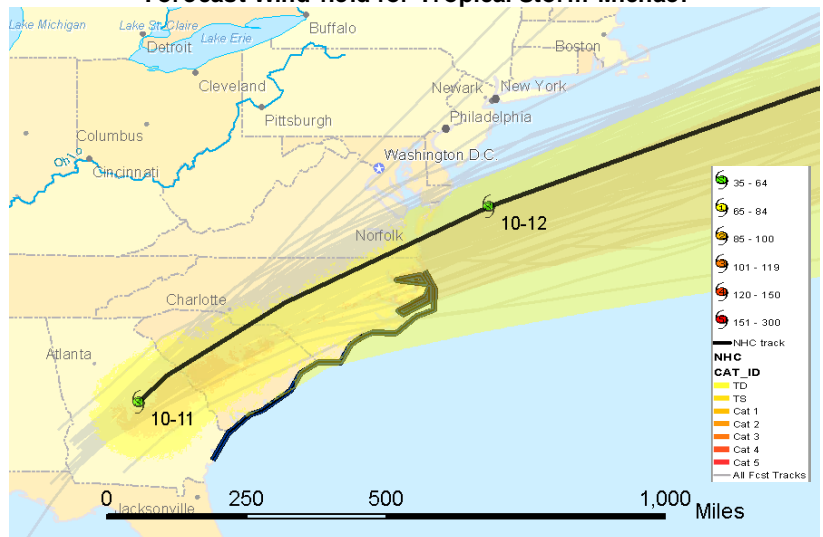
Forecast Summary

- Water has the potential to reach the following heights above ground if peaksurge occurs at the time of high tide: 2-4ft Sound side of the North Carolina Outer Banks from Ocracoke Inlet to Duck.
- Tropical storm conditions are occurring over portions of eastern and southeastern Georgia and South Carolina. These conditions will spread northward across central and eastern portions of North Carolina today. Gale- to storm-force winds are expected over portions southeastern Virginia, extreme northeastern North Carolina, and the Delmarva Peninsula as Michael becomes post-tropical off the Mid-Atlantic coast late tonight or early Friday. Isolated tornadoes are possible today over portions of eastern South Carolina, eastern and central North Carolina, and southeast Virginia.
- Michael is expected to produce the following rainfall amounts through Friday: 4 to 7 inches, from eastern Georgia to the southern Mid-Atlantic states and 1 to 3 inches over the northern Mid-Atlantic states and coastal southern New England. Isolated maximum amounts of 9 inches are possible in North Carolina and Virginia.

Forecast Track for Tropical Storm Michael



Forecast Wind-field for Tropical Storm Michael



© Copyright 2018 Willis Limited / Willis Re Inc. All rights reserved. No part of this publication may be reproduced, stored in a retrieval system, or transmitted in any form or by any means, whether electronic, mechanical, photocopying, recording, or otherwise, without the permission of Willis Limited/Willis Re Inc. Some information contained in this report may be compiled from third party sources, however, we do not guarantee and are not responsible for the accuracy of such. This report is for general information only, is not intended to be relied upon, and any action based on or in connection with anything contained herein should be taken only after obtaining specific advice. The views expressed in this report are not necessarily those of Willis Limited/Willis Re Inc, or any of its parent/sister companies, subsidiaries or affiliates, Willis Towers Watson PLC or any member companies thereof (hereinafter "Willis Towers Watson"). Willis Towers Watson accepts no responsibility for the content or quality of any third party websites to which we refer.

The TAOS real-time hazard and impact forecast information is provided "as is" and without warranties as to performance or any other warranties whether expressed or implied. The user is strongly cautioned to recognize that natural hazards modeling and analysis are subject to many uncertainties. These uncertainties include, but are not limited to, the uncertainties inherent in weather and climate, incomplete or inaccurate weather data, changes to the natural and built environment, limited historical records, and limitations in the state of the art of modeling, as well as limits to the scientific understanding of storm weather phenomena. Anyone making use of the hazard and impact information provided by KAC, or the information contained within, assumes all liability deriving from such use, and agrees to "hold harmless" any and all agencies or individuals associated with its creation. The user agrees to provide any subsequent users of this data with this disclaimer. The publication of the material contained herein is not intended as a representation or warranty that this information is suitable for any general or particular use.

Hazard and damage potential maps produced by Willis are based on numerical modeling results from Kinetic Analysis Corporation.



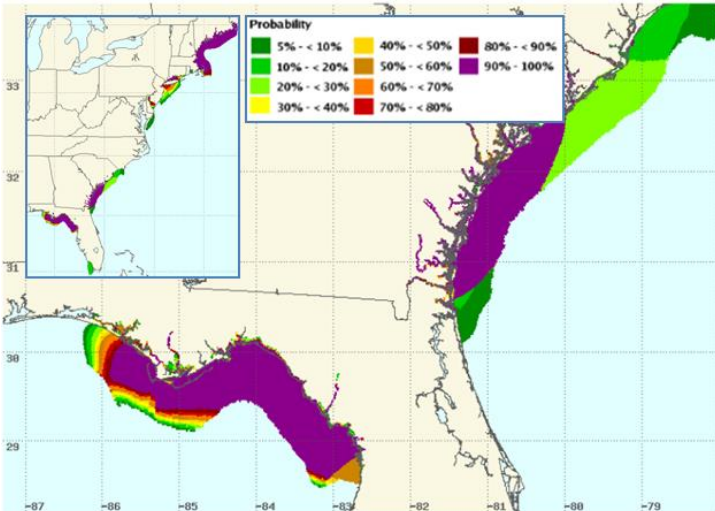
Coastal Watches and Warnings

A Tropical Storm Warning – meaning tropical storm conditions are expected within the warning area - is in effect for Altamaha Sound Georgia to Duck North Carolina; Pamlico and Albemarle Sounds.

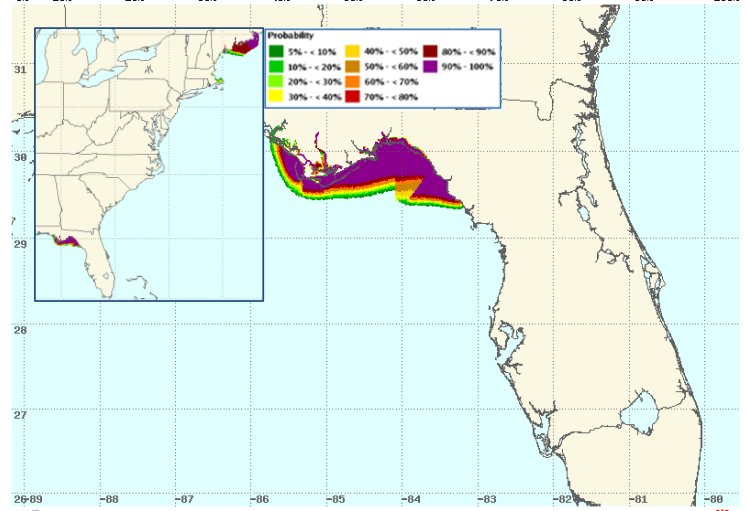
Storm Surge Potential

The images below show the NHC's probabilities for a storm surge exceeding 3 feet (left) and 6 feet (right), between 1PM EST Oct 10 and 7PM EST Oct 14. Probabilities for a surge exceeding 6 feet are highest (90% - 100%) along the Florida Gulf Coast near Panama City. A Storm Surge Watch – meaning inundation from rising water moving inland is possible during the next 48 hours - is in effect for: Ocracoke Inlet North Carolina to Duck North Carolina.

Probability of Surge exceeding 3 feet



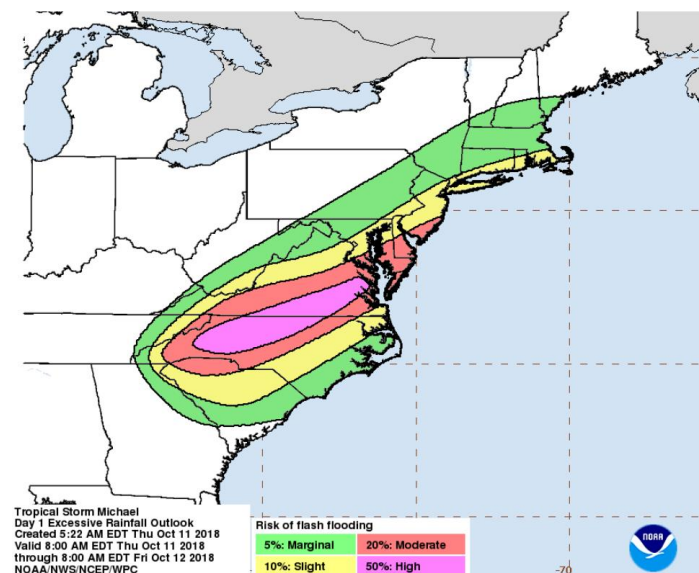
Probability of Surge exceeding 6 feet



Flash Flooding Potential and Most Likely Arrival Time of Tropical Storm Force Winds

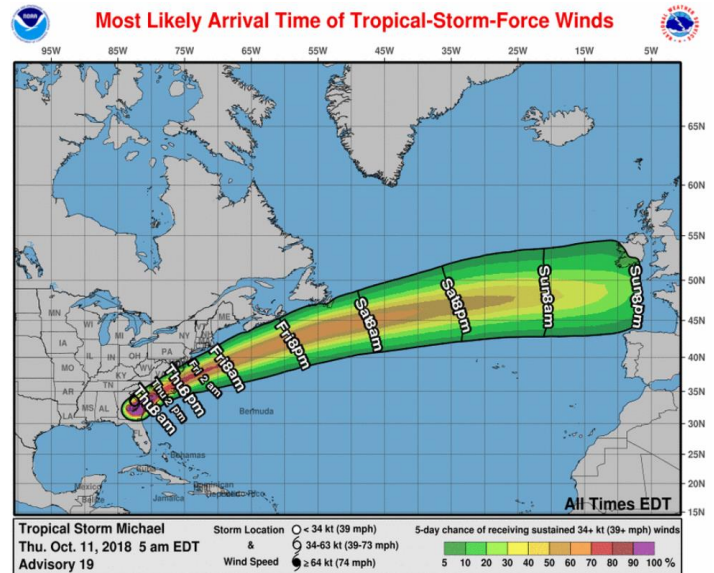
Flash Flooding Potential

The graphic below shows flash flooding potential through Friday morning at 8 AM EDT.



Most Likely Arrival Time of Tropical-Storm-Force Winds

The graphic below shows the most likely arrival time of tropical storm force winds - the time before or after which the onset of tropical-storm-force winds is equally likely. It also shows probabilities of sustained (1-minute average) surface wind speed equal to or exceeding 34 kt (39 mph) for the next five days. This graphic is based on the official National Hurricane Center (NHC) track, intensity, and wind radii forecasts, and on NHC forecast error statistics for those forecast variables during recent years.



Contact us

Roy Cloutier
roy.cloutier@willistowerswatson.com
+1 (952) 841-6652

Ryan Vesledahl
ryan.vesledahl@willistowerswatson.com
+1 (952) 841-6672

Matt Nicolai
matt.nicolai@willistowerswatson.com
+1 (952) 841-6657